



Building with conscience.

StoColor[®] Wood Stain

Standard Wood Color Collection

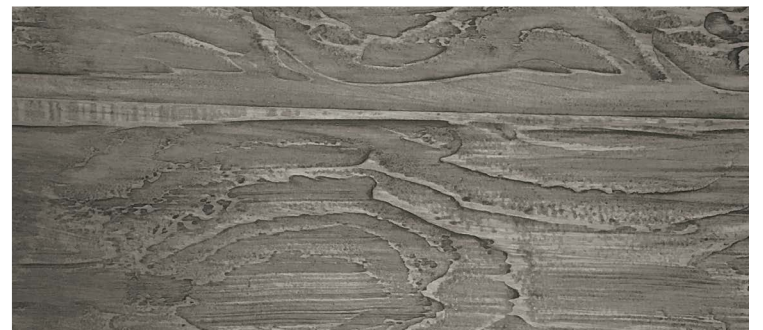
Facades



Interiors



StoColor[®] Wood Stain broadens the already extensive range of creative options for designers with the ability to achieve an authentic wood appearance. The wide variety of colors and the ability to select a gloss or matte sheen provide a natural looking aesthetic to a building's interior or exterior.





StoColor Wood Stain Collection

StoColor Wood Stain is an acrylic-based stain for use as a topcoat over StoVeneer Wood and StoSignature® Wood. It provides superior UV protection for long lasting colors and is available in gloss or matte sheen. With 15 standard colors and the possibility for custom colors, designers will enjoy the creative freedom to follow their inspiration.

StoColor System

- Quick and easy to understand thanks to a clear, logical system construction
- Offers a harmonic, finely tailored selection of color for interior and exterior use
- Is ergonomic and perception oriented for all phases of color selection and implementation

La Colección Clásica de Color de Sto Corp.

Este es un surtido selecto de colores del sistema StoColor. Esta Colección Clásica representa colores preferidos en Norte America. Para colores adicionales, refierase a la colección completa StoColor System de 800 colores. Pruebe su creatividad con las variedades de texturas en las cuales todos los colores Sto son disponibles. Para aprender mas sobre las soluciones que Sto puede proporcionar, comuníquese al 1-800-221-2397 o por el Intranet en www.stocorp.com.

Sistema StoColor

- Fácil de comprender, debido a su presentación clara y lógica
- Ofrece una selección armonía y a la medida, de colores para interiores y exteriores
- Es ergonómico y orientado hacia toda fase para la selección e implementación decolores

Guide to symbols / Explicación de los símbolos

31437 ■ 73 *

Color no.

Color code/order no.

Numero del tono de color

Código color/numero de pedido

Light Reflectance Value

Value for the quantity of light reflected from the surface. Measured in percent 100 % = white, 0 % = black

Valor Reflejante de Luz

Valor, en por ciento, que mide la cantidad de luz reflejada por la superficie: 100% = Blanco, 0% = Negro

*Please note that certain dark and/or saturated colors may incur increased costs due to high tint charges.

*Tenga presente que ciertos colores oscuros y/o saturados pueden incurrir en mayores costos debido a los elevados costos de los colorantes.

Most Popular Stains; Las manchas más populares



Beech

VT192294



Old Pine

38144



Oak

38146



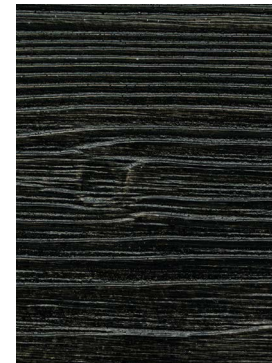
White

38151



Ironwood

VT192392



Charred

VT206772

Please note

The colors presented on this chart are representations. Actual color of manufactured product may vary slightly from the chart. Color perception is affected by degree of gloss, texture, and lighting conditions. For best results always request a product sample, select color under natural lighting conditions, and construct full scale job site mock ups for final color approval.

Minor shade variations may occur from batch to batch (refer to batch no. on pail). Avoid installing separate batches side by side and avoid application in direct sunlight. Avoid installing new finish adjacent to weathered or aged finish. Sto Corp. will not be responsible for shade or color variation from batch to batch, variation caused by application or substrate deficiencies, or fading resulting from natural causes such as weather. See Sto Tech Hotline Nos. 0694-C, 0893-EC and 1202-CF for helpful tips on prevention of color problems.

For Exterior Insulation and Finish Systems (EIFS) select colors with light reflectance value of 20% or greater.

Por Favor Nota

Los colores que aparecen en este muestrario son representaciones. El color real del producto puede variar ligeramente con el del muestrario. El color percibido es afectado por el grado de brillantez, la textura y las condiciones de luz. Para la obtención de los mejores resultados, deberá siempre solicitar una muestra del producto, seleccionar el color bajo condiciones de luz natural, y elaborar muestras en la obra misma para la aprobación final del color.

Pueden presentarse pequeñas variaciones en el tono, de remesa a remesa (favor de referirse al numero de remesa en la cubeta). Evite aplicar adjuntas remesas diferentes, así como a la luz solar directa. Igualmente, evite aplicar el acabado nuevo adjunto a acabados viejos o intemperizados. Sto Corp. no se responsabiliza por la variación en color o tono de remesa a remesa, al método de aplicación, deficiencias en la base, o por decoloración debido a causas naturales como el clima.

Favor de consultar a los Nos. 0694-C, 0893-EC y 1202-CF de Sto Tech Hotline para recibir indicaciones para prevenir problemas.

Para Sistemas de Aislamiento Exterior y Acabado (EIFS), seleccione colores con un valor reflejante de luz del 20% o mayor.



White 38151 █ 66



Pine 38113 █ 40



Ash 38111 █ 39



Light Oak 38103 █ 25



Oak 38146 █ 24



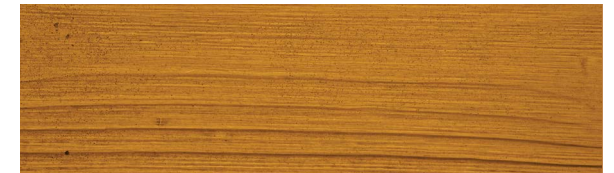
Walnut 38140 █ 18*



Old Pine 38144 █ 28



Grey 38101 █ 44



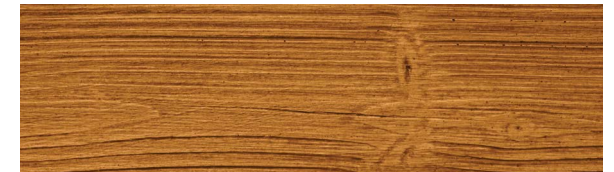
Teak 38147 █ 17*



Beech VT192294 █ 38



Ironwood VT192392 █ 30



Alder VT192393 █ 26



Butternut VT192390 █ 49



Charred VT206772 █ 4*



Willow VT207029 █ 44



A material shows emotion

With Sto, your creative exploration can take you anywhere. Our proven products give you unmatched freedom and the ability to achieve your vision in any color, any form, any texture, any material.

StoColor Wood Stain joins a wide range of color options provided by Sto. Designers are asking for design freedom, but with the assurance that the entire building envelope will perform. By offering these new wood stains, architects have one more alternative to choose from and can achieve a multitude of looks while enjoying the continuity and compatibility of the wall cladding throughout the entire building, no matter the aesthetic chosen.

To learn more about the solutions Sto can provide for you, contact us by calling 1-800-221-2397 or visit us at www.stocorp.com.

Creativity Begins. **Sto Finishes.**®



Sto Americas

Sto Corp.
3800 Camp Creek Pkwy
Building 1400, Suite 120
Atlanta, GA 30331
USA

Phone 1-800-221-2397
www.stocorp.com

ATTENTION

Sto products are intended for use by qualified professional contractors, not consumers, as a component of a larger construction assembly as specified by a qualified design professional, general contractor or builder. They should be installed in accordance with those specifications and Sto's instructions. Sto Corp. disclaims all, and assumes no, liability for on-site inspections, for its products applied improperly, or by unqualified persons or entities, or as part of an improperly designed or constructed building, for the nonperformance of adjacent building components or assemblies, or for other construction activities beyond Sto's control. Improper use of Sto products or use as part of an improperly designed or constructed larger assembly or building may result in serious damage to this product, and to the structure of the building or its components. **STO CORP. DISCLAIMS ALL WARRANTIES EXPRESSED OR IMPLIED EXCEPT FOR EXPLICIT LIMITED WRITTEN WARRANTIES ISSUED TO AND ACCEPTED BY BUILDING OWNERS IN ACCORDANCE WITH STO'S WARRANTY PROGRAMS WHICH ARE SUBJECT TO CHANGE FROM TIME TO TIME.** For the fullest, most current information on proper application, clean-up, mixing and other specifications and warranties, cautions and disclaimers, please refer to the Sto Corp. website, www.stocorp.com.