



StoCast Brick

Application guide

Facade



Interiors



StoCast Bricks are thin, lightweight resin cast bricks for the decoration and protection of facades. They offer limitless design possibilities with a multitude of colors, textures and size options and can be used in Sto engineered wall cladding systems.



Content

Product information

03 General information

- 03 Material Orders
- 03 Preliminary Work

Surface Description

- 04 StoCast Brick
- 05 Application Steps

Details

06 StoCast Brick Inside and Outside Corners

- 07 StoCast Brick Termination at EPS Trim
- 07 StoCast Brick on Radiused Outside Corner

Notes and Tips

08 Notes and Tips



General information

Material orders

It is recommended to order all the StoCast Brick needed for a project on one order to avoid batch differences. We also strongly suggest ordering additional material to account for potential waste and need for repairs and touch ups.

Coverage of StoCast Brick is based on a 3/8" (10mm) joint size.

Preliminary work

Establishing the brick layout is crucial. Even though StoCast Brick can be easily cut to make adjustments, planning the brick layout based on the design of the building is very important to achieve the desired look.

Before installing the cladding, divide up the surface to be covered. To do this, if necessary put height markers all the way around the building. Also pay attention to the following points:

- Brick and wall sizes
- Joint width
- Openings such as windows and doors lintels

Construct a mock-up under actual conditions of use to verify proper surface preparation, coverage, and aesthetics, for approval by the appropriate authority.



StoCast Brick

Resin cast bricks



Surface Description

Description	<ul style="list-style-type: none"> • Authentic brick aesthetic
Products	<ul style="list-style-type: none"> • Sto Bonding & Pointing Mortar • StoCast Brick
Possible Color Shades	<ul style="list-style-type: none"> • 30 standard bricks and custom bricks, matches are available. • StoColor System; LRV \geq 20 for StoTherm® ci systems with EPS, GPS or XPS insulation. • The minimum permissible light reflectance value (LRV) depends on the substrate, the system, and the product.



3/8" Modified Masonry Pointing Tool

Modified with 3/8" or 1/2" Surgical Tubing



Paint Brush



Hand Brush

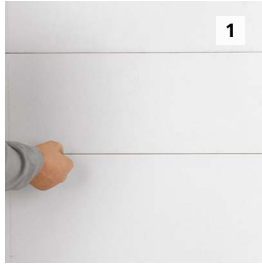


**1/4" x 1/4" Square Notched
Stainless Steel Trowel**

Please note that the details, illustrations, general technical information, and drawings contained in this brochure are only general proposals and details which merely describe the basic functions schematically. They are not dimensionally accurate. Applicator/customer is independently responsible for determining the suitability and completeness for the product in question. Adjacent works are described only schematically. All specifications and information must be adjusted or agreed in the light of local conditions and do not constitute work, detail or installation plans. The technical specifications and product information in the Product Bulletins and in system details and specifications must be observed.



Application steps



1

Install StoCast Brick units from top to bottom in accordance with the planned layout and start from a corner. Establish layout lines for the pattern in use.



2

Starting from the top corner, apply Sto Bonding & Pointing Mortar using a ¼ x ¼ x ¼ inch square notched stainless steel trowel and comb it vertically.

Only apply Sto Bonding & Pointing Mortar to the area which will be covered immediately afterwards. Install StoCast Brick before a “skin” forms on the mortar.



3

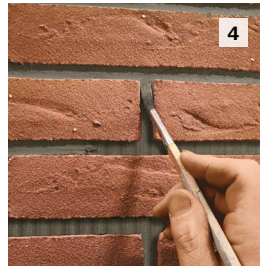
Press and gently slide the StoCast Brick units into the freshly applied mortar.

Align the StoCast Brick units by eye or use spacers. A plumb line can be used if necessary. Fully bed the units in the mortar to ensure no gaps or cavities exist in the mortar.



4

As soon as the StoCast Brick units are held in place with the mortar, work the joint areas with a small paint brush or modified pointing tool to compact and smooth the mortar and to create a joint profile that covers the edges and ends of the units.



4

Using a sponge, remove adhesive from the face of the units if necessary. It is easier to remove the adhesive while it is wet than dry.

After mortar is completely dry, touch-up mortar joints if needed to seal edges or to sharpen aesthetics.



5

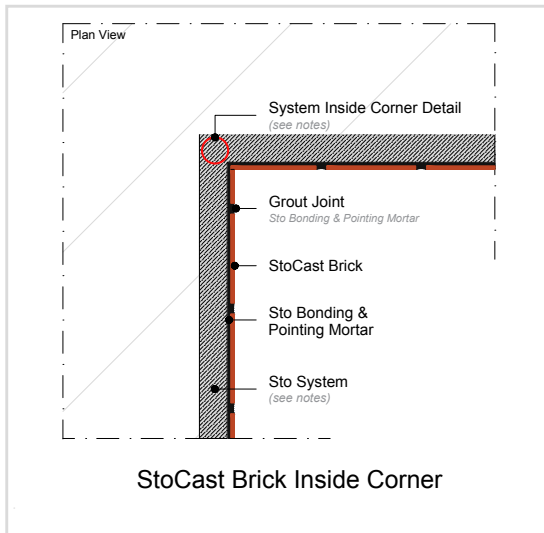
Once the adhesive has dried, clean the surface of the units using a suitable hand brush if necessary.

Carefully remove any surface-dry adhesive remnants on the surface using a utility knife or a leftover piece of StoCast Brick.



StoCast Brick

Inside & Outside Corners



Notes:

StoPowerwall®

Bend self-furred lath, attach tight to inside corner, and extend minimum 24-in past corner; or, use Cornerite™ accessory wire tied to metal lath ([Sto Detail No. 4.54](#))

StoQuik® Silver Drainscreen

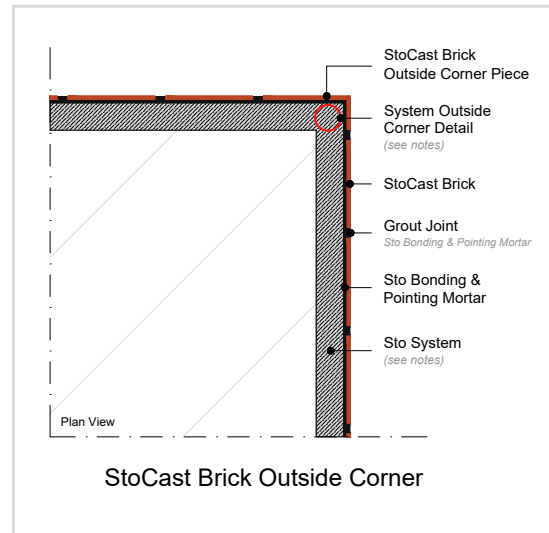
Embed Sto Mesh in Sto Base Coat and fold 8-in each direction ([Sto Detail No. 11.53b DS](#))

StoTherm® ci

Double wrap with Sto Mesh embedded in Sto Base Coat and fold 8-in each direction around corner ([Sto Detail No. 52s.54B](#)); or, embed 9.5-in wide Sto Detail Mesh in Sto Base Coat at corner, followed by Sto Mesh embedded in Sto Base Coat around corner.

StoVentec® Rainscreen®

Install Sto Edge Protection Profile G and Sto Joint Sealing Tape followed by Sto Mesh 6oz embedded in Sto Base Coat up to corner. Make small straight line cut in finish with scoring knife at corner ([Sto Detail no. 90.R.400](#))



Notes:

StoPowerwall®

Install Stucco Corner Bead Accessory ([Sto Detail No. 4.55](#)).

StoQuik® Silver Drainscreen

Install Sto-Mesh Corner Bead Standard Accessory ([Sto Detail No. 11.54 DS](#)); or, embed 9.5-in wide Sto Detail Mesh in Sto Base Coat, followed by Sto Mesh embedded in Sto Base Coat around corner ([Sto Detail No. 11.54 DS](#))

StoTherm® ci

Install Sto-Mesh Corner Bead Standard Accessory ([Sto Detail No. 52s.54A](#)); or, embed Sto Mesh in Sto Base Coat, and fold 8-in each direction ([Sto Detail No. 52s.54B](#)).

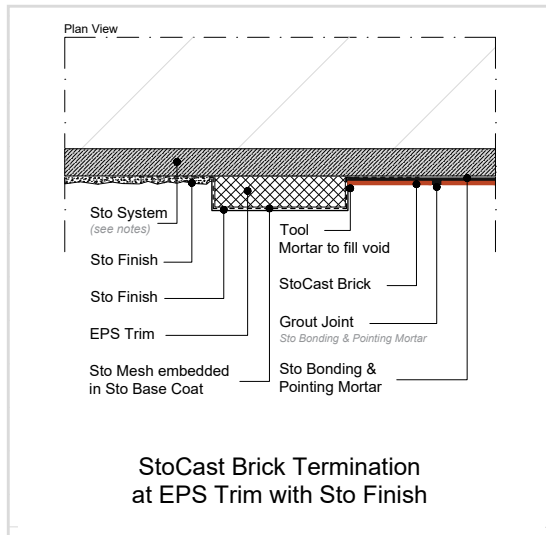
StoVentec® Rainscreen®

Install Sto-Mesh Corner Bead Standard Accessory ([Sto Detail No. 90.R.410](#)).

StoCast Brick

StoCast Brick Termination at EPS Trim

StoCast Brick on Radiused Outside Corner



Notes:

StoPowerwall

Embed Sto Mesh or Sto Detail Mesh in Sto Base Coat over EPS Trim and extend minimum 3-in onto stucco.

StoQuik Silver Drainscreen

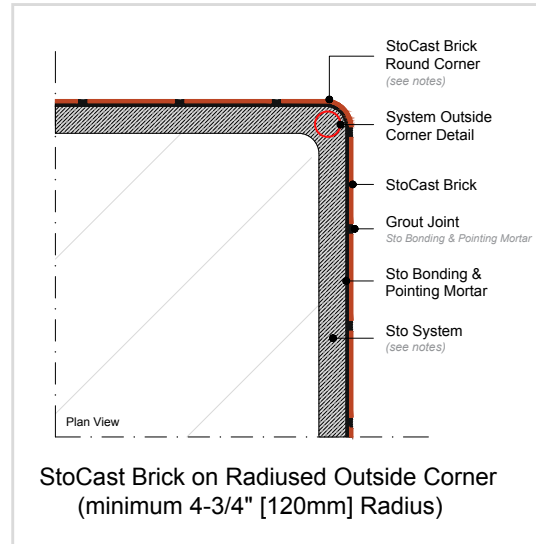
Embed Sto Mesh in Sto Base Coat over EPS Trim and extend minimum 3-in onto cement board. ([Sto Detail No. 11.04b DS](#))

StoTherm ci

Embed Sto Mesh or Sto Detail Mesh in Sto Base Coat over EPS Trim and extend minimum 3-in onto Sto EPS Insulation Board. ([Sto Detail No. 52s.04](#))

StoVentec Rainscreen

Embed Sto Mesh or Sto Detail Mesh in Sto Base Coat over EPS Trim and extend minimum 3-in onto Sto Carrier Board A+.



Notes:

StoPowerwall

Install a wire Bullnose stucco corner lath or accessory (without metal or vinyl nosing, so stucco is the substrate around the curved corner).

StoQuik Silver Drainscreen¹

Install a flexible cement board, then embed 9.5-in wide Sto Detail Mesh in Sto Base Coat, followed by Sto Mesh embedded in Sto Base Coat around corner.

StoTherm ci

Embed Sto Mesh in Sto Base Coat, and fold 8-in each direction around pre-formed EPS or XPS insulation board ([Sto Detail No. 52s.54B](#)).

StoVentec Rainscreen¹

Score backside of Sto Carrier Board A+.

1. The substrates in these systems cannot accommodate the minimum 4-3/4" (120mm) radius. Refer to cement board or Sto Carrier Board A+ product literature



Notes and Tips

Mortar joints

Mortar joints have a high impact on the appearance of the facade. We offer 9 standard colors to provide design flexibility. Please refer to our website or request our Sto Bonding & Pointing Mortar grout kit. Maximum width of grout joints: 3/4 inch (19mm).

Brick Patterns

StoCast Brick mimics the look of brick. They can generally be installed using the same patterns offered by the masonry industry. Complex patterns increase the difficulty of the application. In order to achieve the best color result, make sure to pick shapes from different boxes. This also applies to monochromatic shapes. We recommend a mock-up be constructed for approval in an inconspicuous area to be used as a reference. Precisely planning the layout for the pattern is a prerequisite. In the case of complex patterns, we recommended laying out the elements on a horizontal surface in accordance with the specified pattern / installation plan before application. If possible, start work on a wall that is not directly visible, as the application process can be optimized during the course of the work.

Preliminary work

Details, such as termination at grade, connections to adjacent building elements (window/door frame, window sill, roof, sheet metal, etc.), structural expansion joints must be planned in advance and coordinated between the relevant parties. The application instructions of Sto are to be observed. Refer to the applicable Sto System specifications and details.

Hand-held samples and sample surface areas

Smaller samples are not always suitable for providing an overall impression of an application technique on larger facade surfaces. For this reason, we highly recommend having the contractor prepare a mock up sample. If this work requires scaffolding, this should be taken into account when creating the sample. The finished sample area should be inspected and accepted by the site manager/building owner. The area provides a reference surface for the contracted service.

Size of the area

For large facades, we recommend dividing the surface to be created into smaller partial areas. This simplifies calculations and execution for best application results.

Scaffolding

The scaffolding must be appropriate for the trade processes being carried out and the techniques and tools used: take into account the spacing, the brackets and the positioning and height of the scaffolding.

Weather protection

If the weather is unfavorable during the application and drying processes, it is necessary to put in place appropriate protective measures (rain/solar protection, etc.).

Corner areas/connections

Carefully plan connections and corner areas. It may be necessary to use a different application technique in these areas.

Limitations

- Minimum radius: 4-3/4 inches (120 mm).
- Use only when surface and ambient temperatures are above 50 to 85°F (5-30°C) during application and drying period.
- Do not use on horizontal or below grade surfaces, projecting ledges, sills, or sloped surfaces, or where immersion in water may occur.
- Do not use on roof or roof-like surfaces.
- Select colors with Light Reflectance Value (LRV) greater than or equal to 20 when used over StoTherm ci system. (No LRV restrictions when used over StoTherm ci Mineral system)
- Not recommended to clean with abrasive or high pressure wash methods. Use low pressure (up to 500 psi [3.45 MPa]).

Cleaning, repair and maintenance

Refer to the StoCast Brick Repair and Maintenance Guide.

ATTENTION

Sto products are intended for use by qualified professional contractors, not consumers, as a component of a larger construction assembly as specified by a qualified design professional, general contractor or builder. They should be installed in accordance with those specifications and Sto's instructions. Sto Corp. disclaims all, and assumes no, liability for on-site inspections, for its products applied improperly, or by unqualified persons or entities, or as part of an improperly designed or constructed building, for the nonperformance of adjacent building components or assemblies, or for other construction activities beyond Sto's control. Improper use of Sto products or use as part of an improperly designed or constructed larger assembly or building may result in serious damage to this product, and to the structure of the building or its components. **STO CORP. DISCLAIMS ALL WARRANTIES EXPRESSED OR IMPLIED EXCEPT FOR EXPLICIT LIMITED WRITTEN WARRANTIES ISSUED TO AND ACCEPTED BY BUILDING OWNERS IN ACCORDANCE WITH STO'S WARRANTY PROGRAMS WHICH ARE SUBJECT TO CHANGE FROM TIME TO TIME.** For the fullest, most current information on proper application, clean-up, mixing and other specifications and warranties, cautions and disclaimers, please refer to the Sto Corp. website, www.stocorp.com.

Sto Americas

Sto Corp.
3800 Camp Creek Pkwy
Building 1400, Suite 120
Atlanta, GA 30331
USA

Phone 1-800-221-2397
www.stocorp.com



Scan to view Sto
Bonding & Mortar
Grout Kit.