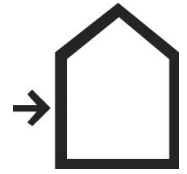


## PRODUCT BULLETIN

# Sto Thermo Dowel

81637-009 Thermo Dowel S 100mm STR H/JT  
81637-010 Thermo Dowel S 120mm STR H/JT  
81637-011 Thermo Dowel S 140mm STR H/JT  
81637-012 Thermo Dowel W 120mm STR H  
81637-013 Thermo Dowel W 140mm STR H

81637-014 Thermo Dowel C 115mm STR U 2G  
81637-015 Thermo Dowel C 155mm STR U 2G  
81638-001 Thermo Dowel Cap Wool  
81639-001 Thermo Dowel Countersunk Tool  
81642-001 Thermo Dowel Special Bit TX25-M8 x 31



## PRODUCT DESCRIPTION

Sto Thermo Dowel is a pre-assembled fastener and dowel for the StoTherm ci Mineral system. It is specifically designed to minimize thermal conductivity.

## USES

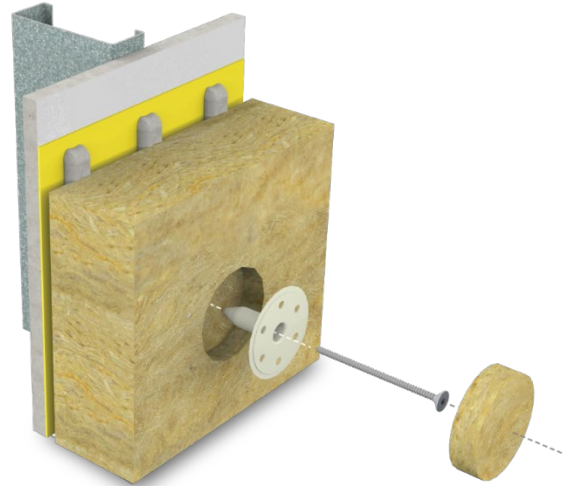
Sto Thermo Dowels are used to anchor insulation boards to the supporting structure in the StoTherm ci Mineral system.

## APPLICATION

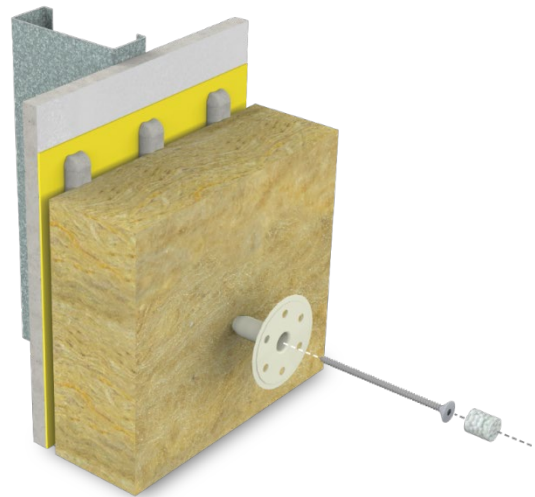
The type of Thermo Dowel used will depend on insulation board thickness and type of framing. Refer to the product information table below.

- For 3" and 4" boards, the dowels are countersunk into the mineral wool.
- The dowels are countersunk into the mineral wool, approximately 3/4" (19mm) with the Sto Thermo Countersunk Tool.
- Sto Thermo Cap Wool (see top right image) is then placed over the countersunk dowel and sits flush with the mineral wool surface.
- See Sto Thermo Cap Wool and Sto Thermo Countersunk Tool information located on page 2 of this document.

For details on fastener patterns and installation, refer to StoTherm ci Mineral installation guide.



Countersunk Sto Thermo Dowel with Sto Thermo Cap Wool



Surface Mount Sto Thermo Dowel with Thermal Plug

Insulation Board Thickness	Surface Mount Or Countersunk	Metal Framing	Wood Framing	Concrete	Packaging (Pieces)
2" (51 mm)	Surface Mount	Thermo Dowel S 100mm STR H/JT2	Thermo Dowel W 120mm STR H	Not Available	100
3" (76 mm)	Countersunk	Thermo Dowel S 120mm STR/H/JT2	Thermo Dowel W 120mm STR H	Thermo Dowel C 115mm STR U 2G	100
4" (102mm)	Countersunk	Thermo Dowel S 140mm STR H/JT2	Thermo Dowel W 140mm STR H	Thermo Dowel C 155mm STR U 2G	100

NOTE: Choose the dowel based on insulation board thickness and type of framing. For wall assemblies not included in this table, please contact Sto Technical Services.

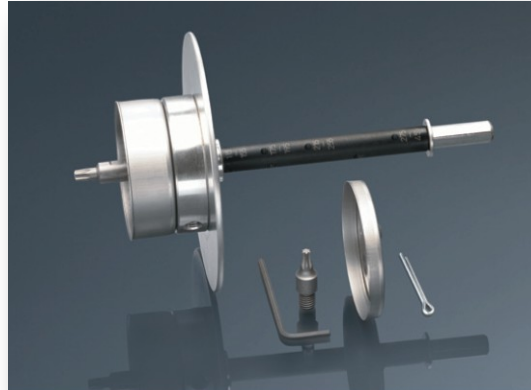
NOTE: Required bits for driving fasteners are: Sto Thermo Dowel C - Torx T30, Sto Thermo Dowel S - Torx T25, and Sto Thermo Dowel W - Torx T25

## PRODUCT BULLETIN

# Sto Thermo Dowel

### STO THERMO COUNTERSUNK TOOL

The Sto Thermo Countersunk Tool is used to countersink Sto Thermo Dowels and drive them into the supporting structure. The tool compresses the mineral wool insulation board, prevents over-driving and helps achieve the proper depth for the dowel to be countersunk.



### DOWEL CAPS

Sto Thermo Cap Wool is inserted into the recess after the dowels are properly countersunk. It aids to minimize thermal conductivity.



### Sto Canada Ltd.

1821 Albion Road  
Unit 1-2  
Etobicoke, ON M9W 5W8  
Tel: 416-855-0460  
Tollfree: 800-221-2397  
Fax: 404 346-3119  
helpdesk.stocorp.com  
[www.stocanada.com](http://www.stocanada.com)

Revision Number: 2.0  
Date: 05/2019

### ATTENTION

This product is intended for use by qualified professional contractors, not consumers, as a component of a larger construction assembly as specified by a qualified design professional, general contractor or builder. It should be installed in accordance with those specifications and Sto's instructions. Sto Corp. disclaims all, and assumes no, liability for on-site inspections, for its products applied improperly, or by unqualified persons or entities, or as part of an improperly designed or constructed building, for the nonperformance of adjacent building components or assemblies, or for other construction activities beyond Sto's control. Improper use of this product or use as part of an improperly designed or constructed larger assembly or building may result in serious damage to this product, and to the structure of the building or its components. **STO CORP. DISCLAIMS ALL WARRANTIES EXPRESSED OR IMPLIED EXCEPT FOR EXPLICIT LIMITED WRITTEN WARRANTIES ISSUED TO AND ACCEPTED BY BUILDING OWNERS IN ACCORDANCE WITH STO'S WARRANTY PROGRAMS WHICH ARE SUBJECT TO CHANGE FROM TIME TO TIME.** For the fullest, most current information on proper application, clean-up, mixing and other specifications and warranties, cautions and disclaimers, please refer to the Sto Corp. website, [www.stocorp.com](http://www.stocorp.com).