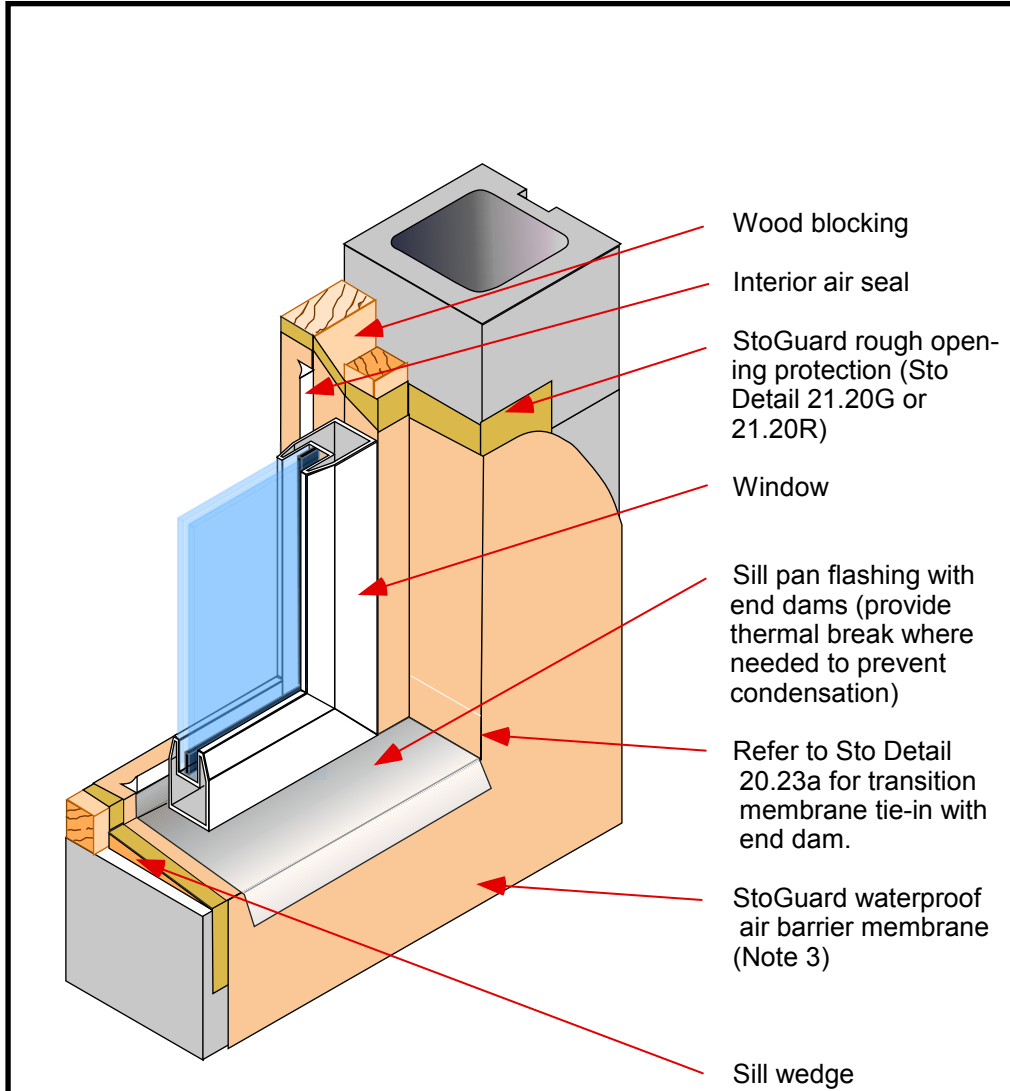




StoGuard[®] Waterproof Air Barrier Masonry Construction Window Sill / Jamb

Detail No.: 21.23

Date: April 2012



Notes:

- 1] Prepare substrate in accordance with Sto Detail 21.00a, 21.00b or 21.00c.
- 2] Prepare rough opening in accordance with Sto Detail 21.20G or 21.20R.
- 3] Refer to Sto Details 21.00a and 21.00b for StoGuard waterproof air barrier membrane product options. All applications must be applied such that a void and pinhole free surface is achieved.
- 4] Outer perimeter weather seal not shown for clarity.
- 5] Refer to Sto specifications and product bulletins for detailed information on substrates and Sto material options.

IMPORTANT: The number of coats and thickness of coating is highly dependent on CMU composition, unit weight (lightweight or normal weight), porosity, joint profile, and other variables that may exist. For irregular or "rough" CMU wall surfaces skim coat the entire wall surface with a Sto base coat, leveling or parging material to fill and level the surface prior to applying the waterproof air barrier membrane and transition materials. When a skim coat of the leveling material is to be applied only one coat of the waterproof air barrier membrane is typically required (refer to Sto Detail 21.00b). Use a site mock-up and site tests as the basis for the work.

Property of Sto Corp. All Rights Reserved.

IMPORTANT: Components not identified as Sto are furnished by other manufacturers and are not necessarily installed by trades who install the Sto products. Refer to project specific contract documents.

Attention

Sto products are intended for use by qualified professional contractors, not consumers, as a component of a larger construction assembly as specified by a qualified design professional, general contractor or builder. They should be installed in accordance with those specifications and Sto's instructions. Sto Corp. disclaims all, and assumes no, liability for on-site inspections, for its products applied improperly, or by unqualified persons or entities, or as part of an improperly designed or constructed building, for the nonperformance of adjacent building components or assemblies, or for other construction activities beyond Sto's control. Improper use of Sto products or use as part of an improperly designed or constructed larger assembly or building may result in serious damage to Sto products, and to the structure of the building or its components. **STO CORP. DISCLAIMS ALL WARRANTIES EXPRESS OR IMPLIED EXCEPT FOR EXPLICIT LIMITED WRITTEN WARRANTIES ISSUED TO AND ACCEPTED BY BUILDING OWNERS IN ACCORDANCE WITH STO'S WARRANTY PROGRAMS WHICH ARE SUBJECT TO CHANGE FROM TIME TO TIME.** For the fullest, most current information on proper application, clean-up, mixing and other specifications and warranties, cautions and disclaimers, please refer to the Sto Corp. website, www.stocorp.com.

www.stocorp.com