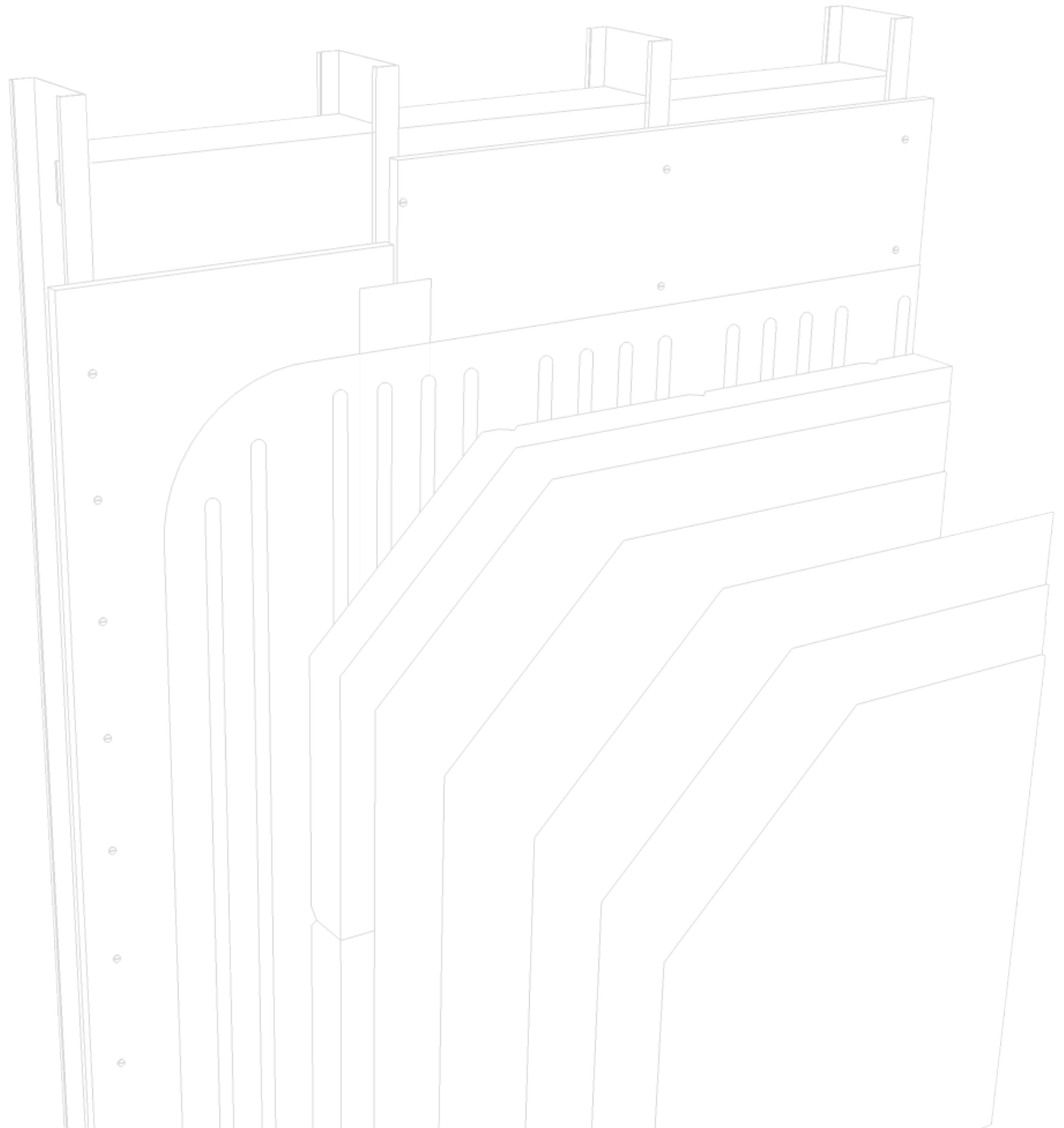


Installation Guide

Sto IMPACT™



ATTENTION

Sto products are intended for use by qualified professional contractors, not consumers, as a component of a larger construction assembly as specified by a qualified design professional, general contractor or builder. They should be installed in accordance with those specifications and Sto's instructions. Sto Corp. disclaims all, and assumes no, liability for on-site inspections, for its products applied improperly, or by unqualified persons or entities, or as part of an improperly designed or constructed building, for the nonperformance of adjacent building components or assemblies, or for other construction activities beyond Sto's control. Improper use of Sto products or use as part of an improperly designed or constructed larger assembly or building may result in serious damage to Sto products, and to the structure of the building or its components.

STO CORP. DISCLAIMS ALL WARRANTIES EXPRESSED OR IMPLIED EXCEPT FOR EXPLICIT LIMITED WRITTEN WARRANTIES ISSUED TO AND ACCEPTED BY BUILDING OWNERS IN ACCORDANCE WITH STO'S WARRANTY PROGRAMS WHICH ARE SUBJECT TO CHANGE FROM TIME TO TIME. For the fullest, most current information on proper application, clean-up, mixing and other specifications and warranties, cautions and disclaimers, please refer to the Sto Corp. website, www.stocorp.com.

Property of Sto Corp. All Rights Reserved.

Sto Canada

1821 Albion Road
Unit 1-2
Etobicoke, ON
Tel: (416) 855-0460

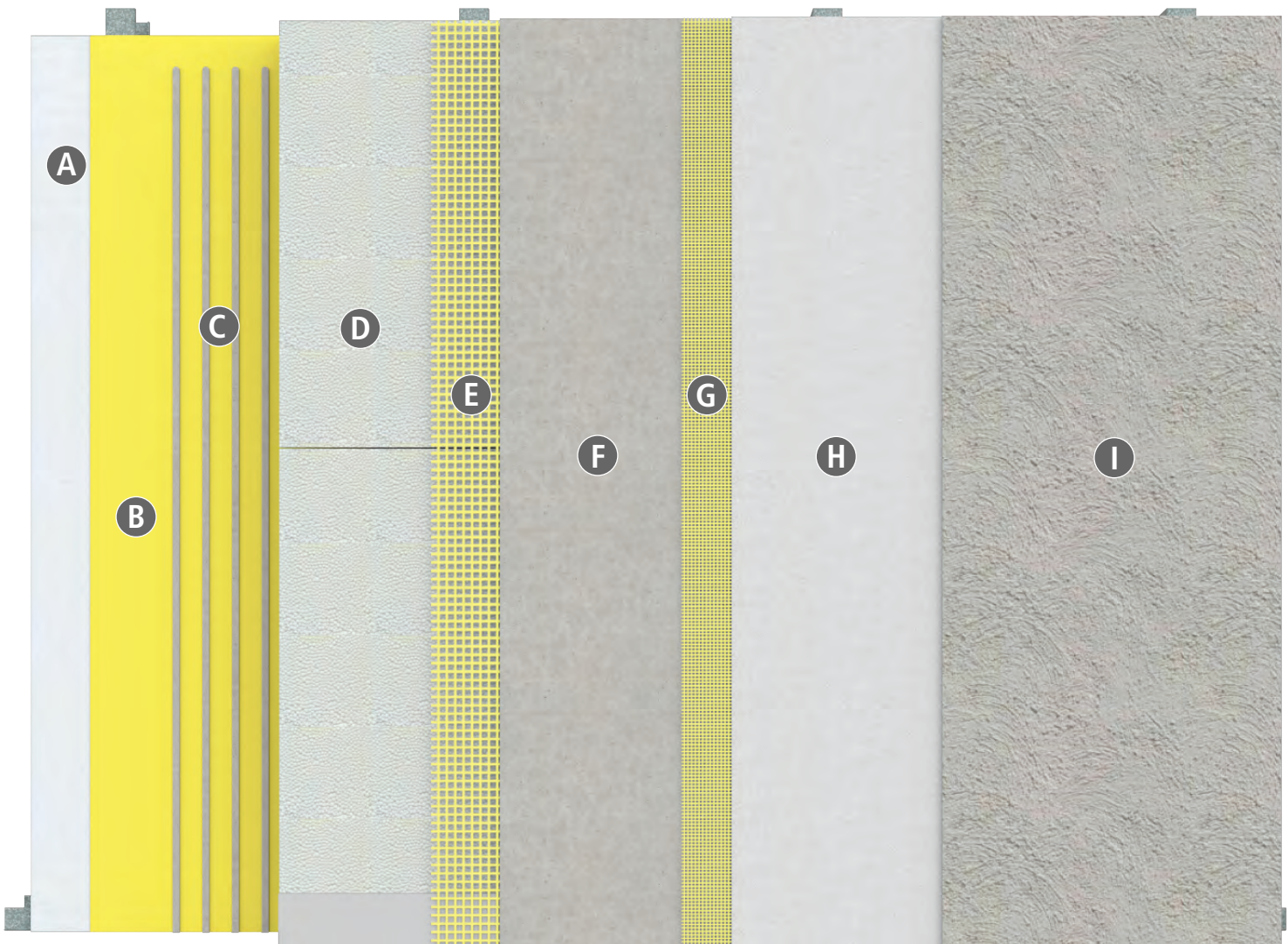


www.stocanada.com

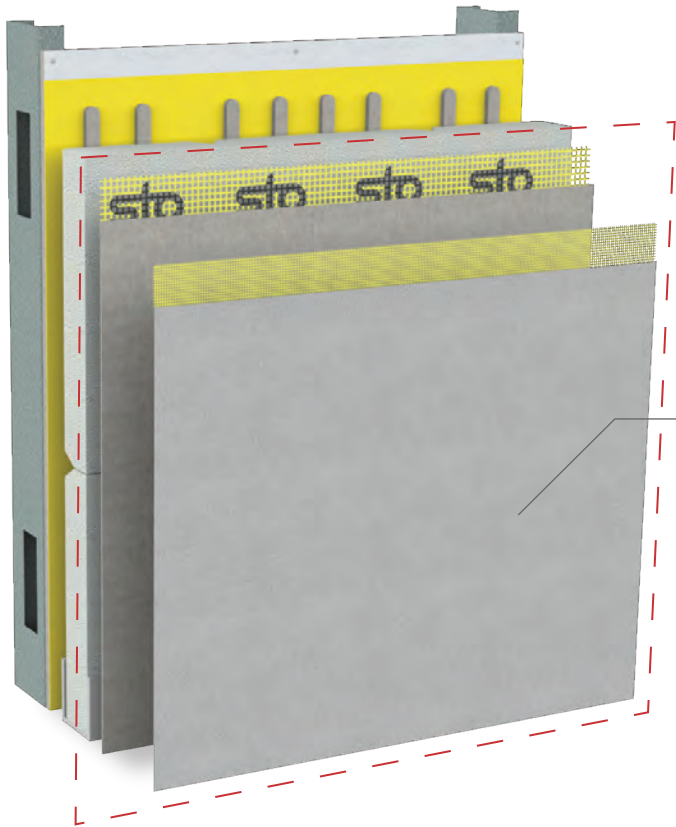
Summary

Sto IMPACT™ is a fortification layer that improves the impact resistance of the cladding assembly from both blunt impact and from repetitive and concentrated impacts (e.g. bird strikes) that can cause serious damage to the cladding systems. This installation guide provides basic information regarding the steps to properly apply the Sto IMPACT fortification layer to new constructions as well as existing EIFS. Sto IMPACT can be added as a fortification layer to any StoTherm ci system where added impact resistance is needed.

- A Substrate:** Glass Mat Gypsum Sheathing (ASTM C1177 compliant) or code compliant OSB, Plywood, Concrete/Masonry, Uncoated Brick or other Masonry Wall Construction.
- B StoGuard® Air & Moisture Barrier**
- C Adhesive:** Sto Primer/Adhesive, Sto Primer/Adhesive-B, Sto Turbostick, Sto BTS Plus, Sto BTS Xtra or Sto BTS Silo.
- D Insulation:** Sto EPS or GPS ProD, Sto EPS or GPS Flatstock, or Mineral Wool Insulation Board.
- E Armor Mesh:** Sto Armor Mat Mesh 425 gm/m² (15 oz/yd²).
- F Base Coat:** Sto Primer/Adhesive, Sto Primer Adhesive-B, Sto BTS Plus, Sto BTS Xtra, or Sto BTS Silo (embedded in Armor Mesh).
- G Mesh:** Sto Mesh 153 gm/m² (4.5 oz/yd²).
- H Fortified Layer:** Sto Armat Classic Plus (embedded in Sto Mesh).
- I Textured Finish:** Stolit or Sto-Ecoshapes Finishes.

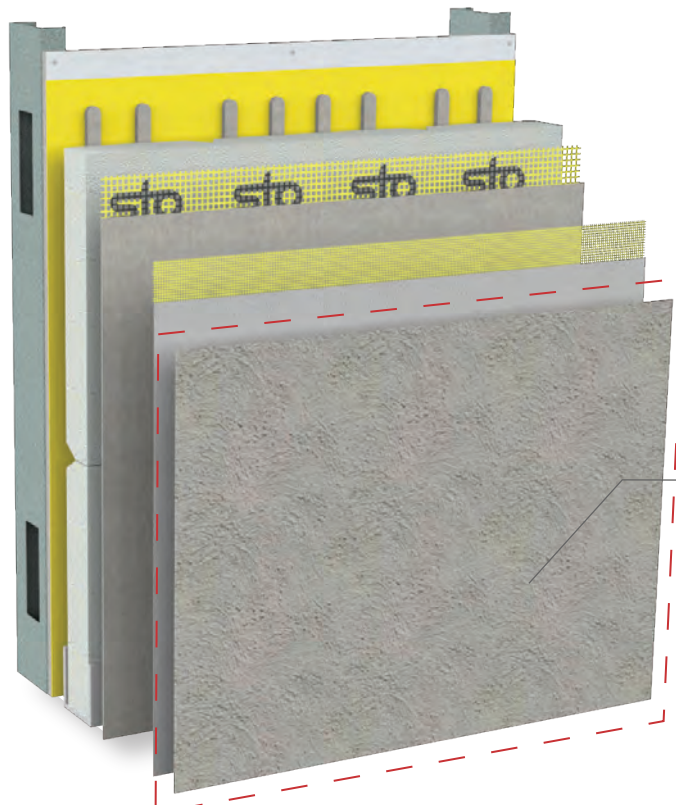


New EIFS Construction



Step 1 - Fortification Layer Installation

- Embed Sto Armor Mat glass fibre reinforcing mesh in Sto cementitious base coat and allow to dry to a nominal 1.6 mm (1/16 in) thickness.
- To install the fortification layer, embed Sto Mesh glass fibre reinforcing mesh into Sto Armat Classic Plus with a stainless steel trowel to a uniform thickness of 3.5-4.0 mm (9/64-5/32 in)
- Work horizontally or vertically in strips slightly more than 1 m wide (40 inches) and immediately embed the mesh into the wet base coat by troweling from the center to edge of the mesh. Overlap mesh seams not less than 64mm (2-1/2 in).
- Avoid wrinkles in the mesh. The mesh must be fully embedded so that no mesh color shows through the base coat.
- Apply a second coat of Sto Armat Classic Plus if the uniform thickness has not been achieved with the initial application.



Step 2 - Finish Layer Installation

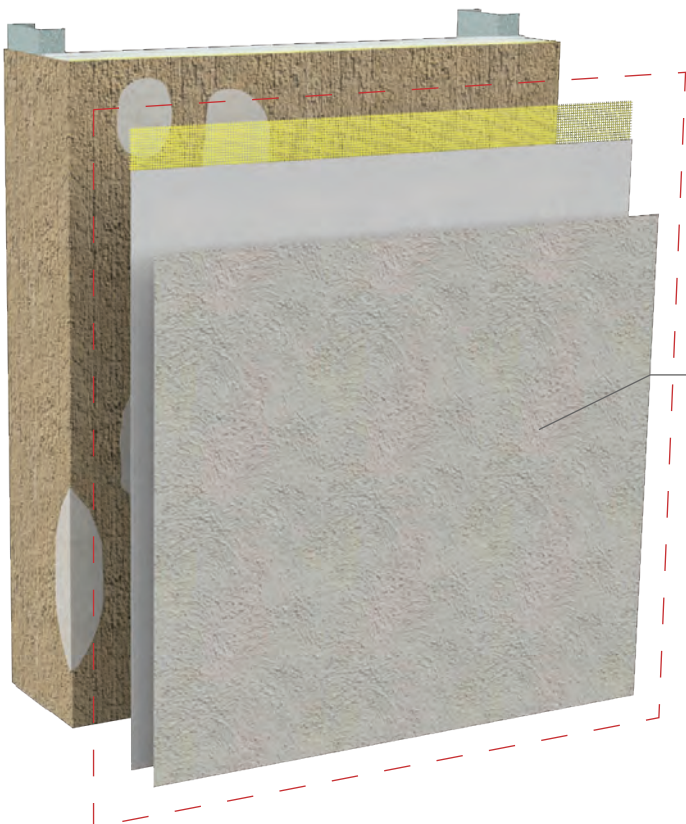
- A Sto Primer (optional) may be applied to the fortification layer once dry. Next, apply a Sto Textured Finish following standard application procedure.

Existing EIFS Construction



Step 1 - Surface Preparation

- Existing EIFS must be properly installed and must have standard grade reinforcing mesh fully embedded in base coat, and textured finish coat.
- Prepare existing surface by pressure washing to remove dirt, grime, algae, mildew, dust, or any other bond-inhibiting material.
- Repair any damage to the existing EIFS with Sto base coat and reinforcing mesh per the StoTherm EIFS Repair and Maintenance Guide.



Step 2 - Fortification & Finish Layer Installation

- Embed Sto Mesh glass fibre reinforcing mesh into Sto Armat Classic Plus with a stainless steel trowel to a uniform thickness of 3.5-4.0 mm (9/64-5/32 in).
- Work horizontally or vertically in strips slightly more than 1 m wide (40 inches) and immediately embed the mesh into the wet base coat by troweling from the center to edge of the mesh. Overlap mesh seams not less than 64mm (2-1/2 in).
- Apply a second coat of Sto Armat Classic Plus if the uniform thickness has not been achieved with the initial application.
- A Sto Primer (optional) may be applied to the fortification layer once dry. Next, apply a Sto Textured Finish following standard application procedure.