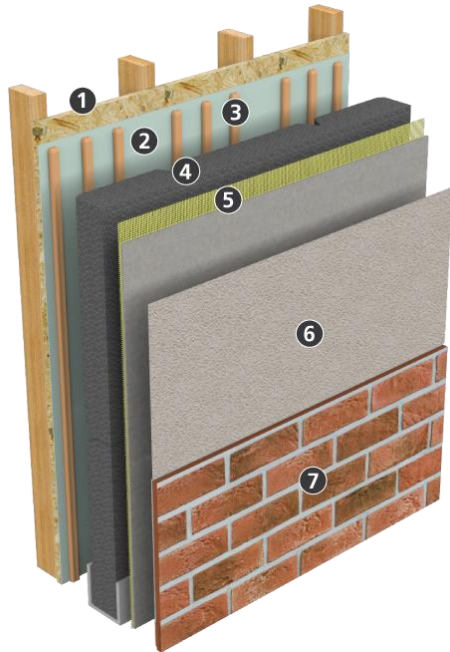


StoTherm ci[®] with Sto-Ecoshapes

Decorative continuous insulation exterior cladding with the look of brick, stone, tile or custom veneer options and a continuous air/moisture barrier for heat, air and moisture control



1)	Substrate (by others): Glass mat gypsum sheathing in compliance with ASTM C1177, code compliant OSB or plywood sheathing, concrete or concrete masonry, existing structurally sound, uncoated brick or other masonry wall construction.
2)	StoGuard [®] Air and Moisture Barrier
3)	<p>A. Adhesive Options: Sto TurboStick¹, Sto BTS Plus, Sto BTS Xtra, or Sto BTS Silo</p> <p>B. Adhesive Options: Sto Primer/Adhesive or Sto Primer/Adhesive-B</p>
4)	Sto EPS ProD Insulation Board or GPS ProD Insulation Board ¹
5)	<p>A. Base Coat Options: Sto BTS Plus, Sto BTS Xtra, or Sto BTS Silo</p> <p>B. Base Coat Options: Sto Primer/Adhesive or Sto Primer/Adhesive-B</p> <p>(A and B options with 153 gm/m² [4.5 oz/yd²] Sto Mesh embedded)</p>
6)	Sto Adhesive and Joint Mortar
7)	<p>A. Sto-Ecoshapes (with adjacent Stolit Lotusan or Stolit MAX finish)</p> <p>B. Sto-Ecoshapes (with adjacent Stolit, or Stolit X finish)</p>

1. Sto TurboStick adhesive required with GPS ProD and GPS flat stock insulation boards.
 2. Flat stock insulation board also permitted where compliance with OBC Part 9 is NOT required.

System Description

StoTherm ci is a decorative and protective exterior wall cladding that combines superior air and weather tightness with excellent thermal performance and durability. It incorporates exterior insulation and a continuous air/moisture barrier with high performance Sto-Ecoshapes in a fully tested wall cladding assembly. Sto-Ecoshapes produce the look of brick, stone, tile or custom designs in a lightweight, durable, and easy-to-install veneer.

Uses

StoTherm ci can be used in residential or commercial wall construction where energy efficiency, superior aesthetics, and heat, air and moisture control are essential in the climatic extremes of Canada. The high R-value of GPS insulation board offers the opportunity to place all of the required insulation outbound of the stud cavity, while Sto-Ecoshapes keep the wall thin relative to traditional thick masonry or stone veneers.

Properties

Weight	< 10 kg/m ² (2 psf)
Allowable insulation thickness	EPS: 38-165 mm (1.5 -6.5") GPS: 76-165 mm (3 -6.5")
RSI value (R-value)	EPS: 0.98 – 4.22 m ² ·K / W (5.6 – 24.0 ft ² ·h·°F / Btu) GPS: 2.48 – 5.38 m ² ·K / W (14.1 – 30.5 ft ² ·h·°F / Btu)
Geometrically defined drainage Cavity (GDCC)	Meets OBC Part 9 requirements
Wind Load Resistance	Tested up to ± 8.60 kPa (180 psf)
Use on Noncombustible Construction	Meets requirements of NBC 2010 and 2015 for use on walls required to be of noncombustible construction ²

Warranty

- A. 12 year Limited Warranty (includes adjacent Stolit Lotusan or Stolit MAX finish when used)
- B. 15 year Limited Warranty (includes adjacent Stolit or Stolit X finish when used)

Maintenance

Requires periodic cleaning to maintain appearance, repair to cracks and impact damage if they occur, recoating to enhance appearance of weathered finish. Sealants and other façade components must be maintained to prevent water infiltration.

2. Some limitations apply. See page 2.

StoTherm® ci with Sto-Ecoshapes

Decorative continuous insulation exterior cladding with the look of brick, stone, tile or custom veneer options and a continuous air/moisture barrier for heat, air and moisture control

Limitations
GPS ProD and GPS flat stock insulation boards require installation with Sto TurboStick Adhesive.
Minimum EPS insulation board thickness 38 mm (1.5 inches). Minimum GPS insulation board thickness 76 mm (3 inches). Maximum EPS or GPS insulation board thickness 165 mm (6.5 inches).
Fire resistance-rated frame walls (CAN/ULC S101) limited to non-load bearing walls with Sto Primer/Adhesive-B, Sto BTS Plus, or Sto BTS Xtra base coats. Some height and set-back limitations may also apply (NBC Table 3.2.3.7). Walls required to be of noncombustible construction (CAN/ULC S134) limited to Sto Primer/Adhesive-B, Sto BTS Plus, Sto BTS Silo, or Sto Primer/Adhesive base coats.
Wind load resistance: ± 8.60 kPa (180 psf) ultimate loads achieved. Ultimate wind load resistance also depends on sheathing, sheathing attachment, and stiffness of supporting construction. Design for maximum allowable deflection of L/240.
For use on vertical above grade walls only. Do not use below grade or on roofs or roof-like surfaces.
Insulation material is flammable. Keep panels away from flame, ignition sources, and high heat [temperatures in excess of 71° C (160°F)].
Dark finish colors with LRV (Light Reflectance Value) < 20 are not recommended.
Air Barrier, insulation board, and base coat materials are not intended for prolonged weather exposure. Allow 30 days maximum between application of air barrier and insulation.
Refer to specific component product bulletins and packaging for other limitations that may apply involving use, handling and storage of component materials.

Sustainable Design	
Regulatory Compliance and Standards Testing	
Ontario Building Code Part 9	Complies with requirements for primary and secondary planes of protection with a 10 mm drainage cavity
CCMC Evaluation Report No. 12416-R*	Complies with NBC 2015. Sto-Ecoshapes compliance pending.
Intertek Listing: Design No. STO/WEIFS 15-01*	CAN/ULC S101-2013, Meets requirements of Clause 3.2.3.8 (1)(b) of the NBC 2010 and 2015 for use on non-load bearing fire resistance rated frame walls (with some height and set-back limitations). Sto-Ecoshapes compliance pending.
Intertek Listing: Design Nos. STO/WEIFS 25-01/25-02*	CAN/ULC S134-2013, Meets requirements of Article 3.1.5.5 of the NBC 2010 and 2015 for use on noncombustible construction. Sto-Ecoshapes compliance pending.
CAN/ULC – S716.1-12*	Complies with ULC – 716.1 Standard for Exterior Insulation and Finish Systems (EIFS) – Materials and Systems. Sto-Ecoshapes compliance pending.

*Refer to specific evaluation report or listing for listed products and any limitations that may apply.

<p>Sto Canada Ltd. 1821 Albion Road Unit 1 - 2 Etobicoke, Ontario M9W 5W8</p> <p>Tel: 416-855-0460 Toll Free: 1-800-221-2397 Fax: 404 346-3119</p> <p>www.stocanada.com</p>	<p>SB-CA-5400E-2 Revision: 001 Date: 01/2018</p>	<p style="text-align: center;">Attention</p> <p>Sto products are intended for use by qualified professional contractors, not consumers, as a component of a larger construction assembly as specified by a qualified design professional, general contractor or builder. They should be installed in accordance with those specifications and Sto's instructions. Sto Canada Ltd. disclaims all, and assumes no, liability for on-site inspections, for its products applied improperly, or by unqualified persons or entities, or as part of an improperly designed or constructed building, for the nonperformance of adjacent building components or assemblies, or for other construction activities beyond Sto's control. Improper use of Sto products or use as part of an improperly designed or constructed larger assembly or building may result in serious damage to this product, and to the structure of the building or its components. STO CANADA LTD. DISCLAIMS ALL WARRANTIES EXPRESS OR IMPLIED EXCEPT FOR EXPLICIT LIMITED WRITTEN WARRANTIES ISSUED TO AND ACCEPTED BY BUILDING OWNERS IN ACCORDANCE WITH STO'S WARRANTY PROGRAMS WHICH ARE SUBJECT TO CHANGE FROM TIME TO TIME. For the fullest, most current information on proper application, clean-up, mixing and other specifications and warranties, cautions and disclaimers, please refer to the Sto Canada Ltd. website, www.stocorp.ca.</p>
---	---	--